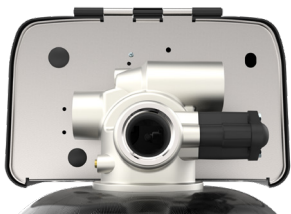


FLECK 2815

1-1/2 INCH CONTROL VALVE

FOR FILTER AND SOFTENER APPLICATIONS



FEATURES/BENEFITS

316 grade stainless steel valve body for superior strength and durability

Continuous service flow rate of 70 GPM with a backwash of 70 GPM

Backwash capability accommodates softener tanks up to 36" in diameter and filter tanks up to 30" in diameter

Fully adjustable 3- or 5-cycle control for efficient and reliable water treatment system operation

Designed for single or multiple tank systems

Corrosion resistant, UV stabilized NEMA 3R rated cover provides protection against water intrusion

Time-tested, hydraulically-balanced piston for service and regeneration

Seal and spacer cartridge simplifies service

CONFIGURATIONS/OPTIONS

NPT Stainless Steel

100-240 VAC operating range with multiple power plug choices (some models)

No hard water bypass piston

Brine cam auxiliary switch

Electromechanical timer auxiliary switch

Black cover with black bezel.
Optional blue or silver bezels only sold separately

XTR2- Premium controller with large color LCD touch screen display offers intuitive navigation and a full complement of advanced features for system type 4 softeners and filters

SXT- Large LCD display and user-selectable time clock or metered functionality for softener and filter systems

Electromechanical Timer- Simple to adjust and easy to service with quick access to all internal components

3200 Electromechanical Timer- 7-day or 12-day time clock operation

3210 Electromechanical Timer- Meter delayed operation



TESTED and CERTIFIED by the WQA to NSF/ANSI Standard 61 Section 8 Material Safety Only.



TESTED and CERTIFIED by the WQA to NSF/ANSI Standard 372 for Lead Free Compliance.



UL recognized to 979

VALVE SPECIFICATIONS

Valve Material	Stainless Steel - 316 Grade
Inlet/Outlet	1-1/2" NPT
Cycles	3 or 5

FLOW RATES (50 PSI INLET) - VALVE ALONE

Continuous 15 psi (1.0 bar) drop	70 GPM (265.0 LPM)
Peak 25 psi (1.7 bar) drop	90 GPM (340.7 LPM)
Cv flow at 1 psi (0.07 bar) drop	18 GPM (68.1 LPM)
Max. Backwash 25 psi (1.7 bar) drop	70 GPM (265.0 LPM)

REGENERATION

Downflow/Upflow	Downflow only
Adjustable Cycles	Yes
Timer Available	
XTR2:	0 - 240 min/cycle
SXT:	0 - 99 min/cycle
Electromechanical:	0 - 164 min/regeneration

METER INFORMATION

Meter Accuracy	
1" Paddle:	0.7 - 40 GPM ± 5% (2.6 - 151.4 LPM)
1-1/2" Paddle:	1.5 - 75 GPM ± 5% (5.7 - 283.9 LPM)
Meter Capacity Range	
XTR2:	1 - 9,999,999 gal (0-99,999 m ³)
SXT:	1 - 999,900 gal (0 - 3,785 m ³)
1" EM Standard:	310 - 5,270 gal (1.2 - 20 m ³)
1" EM Extended:	1,550 - 26,350 gal (6 - 100 m ³)
1-1/2 EM Standard:	625 - 10,625 gal (2.5 - 40 m ³)
1-1/2" EM Extended:	3,125 - 53,125 gal (12 - 200 m ³)

EM = Electromechanical

DIMENSIONS

Distributor Pilot/ Riser Tube Diameter	1.9" OD Tube (48.3 mm)
Drain Connection	1-1/2" NPT
Brine Valve	1/2" OD Tube (13 mm)
Injector System	1720
Mounting Base	4" - 8 UN
Height from Top of Tank	9" (229 mm)
Riser Height	0.25" (6.3mm) below flush ± 0.25" (6.3mm)

TYPICAL APPLICATIONS

Water Softener	14 - 36" (356-914 mm) diameter
Filters	14 - 30" (356-762 mm) diameter based on 10 GPM/ft ²

ADDITIONAL INFORMATION

Electrical Rating	24/100-240V 50/60 Hz 40VA max.
Estimated Shipping Weight	22 lbs. (10 kg.)
Pressure	
Hydrostatic:	300 psi (20 bar)
Working:	20 - 125 psi (1.4 - 8.5 bar)
Water Temperature	34 - 150°F (1 - 66°C)



13845 BISHOPS DR., SUITE 200, BROOKFIELD, WI 53005 USA
P: 262.238.4400 | WATERPURIFICATION.PENTAIR.COM | CUSTOMER CARE: 800.279.9404 | tech-support@pentair.com
© 2018 Pentair Residential Filtration, LLC. All rights reserved.

§For a detailed list of where Pentair trademarks are registered, please visit waterpurification.pentair.com/brands. Pentair trademarks and logos are owned by Pentair plc or its affiliates. Third party registered and unregistered trademarks and logos are the property of their respective owners.

4004630 REV A JE18