

# CONTROLLERS



## XTR2

- ◆ Premium touch screen LCD display
- ◆ Upgraded interface
- ◆ Customizable programming
- ◆ Field programmable



## SXT

- ◆ Large LCD display
- ◆ Programmable time clock or metered
- ◆ Applicable to filter or softener systems



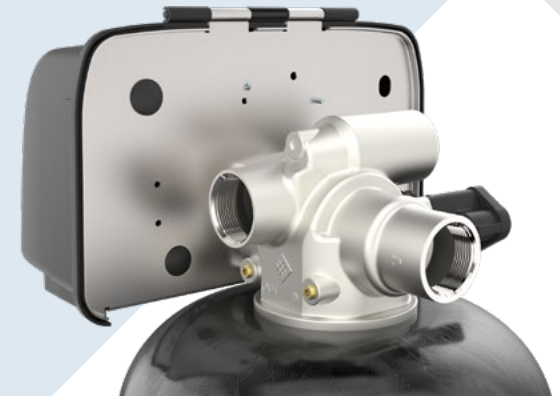
## ELECTROMECHANICAL

- ◆ Quick access to all internal components
- ◆ 24V motor
- ◆ Applicable to filter or softener systems



**FLECK**  
2815 COMMERCIAL VALVE

**BUILT TO LAST**



13845 BISHOPS DR., SUITE 200, BROOKFIELD, WI 53005 USA  
P: 262.238.4400 | [WATERPURIFICATION.PENTAIR.COM](http://WATERPURIFICATION.PENTAIR.COM)  
CUSTOMER CARE: 800.279.9404 | [tech-support@pentair.com](mailto:tech-support@pentair.com)  
© 2018 Pentair Residential Filtration, LLC. All rights reserved.  
§For a detailed list of where Pentair trademarks are registered, please visit [waterpurification.pentair.com/brands](http://waterpurification.pentair.com/brands). Pentair trademarks and logos are owned by Pentair plc or its affiliates. Third party registered and unregistered trademarks and logos are the property of their respective owners.

4005272 Rev A JL18

**MADE IN THE  
USA**  
OF FOREIGN & DOMESTIC PARTS

# PRODUCT OVERVIEW

The 1-1/2" downflow Pentair Fleck commercial valve is available with no hard water bypass option, designed specifically to support many of the current Pentair Fleck timers and controls. The 2815 is built with a corrosion resistant 316 stainless steel valve body and zero lead content, with a hot water rating of 150°F.

◆ **ZERO LEAD CONTENT**

Stainless steel valve body has higher purity and resistance to corrosion

◆ **FLEXIBLE**

Uses the same Pentair powerhead and controller options

◆ **EASILY SERVICED**

Improved piston and seal & spacer cartridge service access

## FEATURES



Corrosion resistant 316 stainless steel valve body

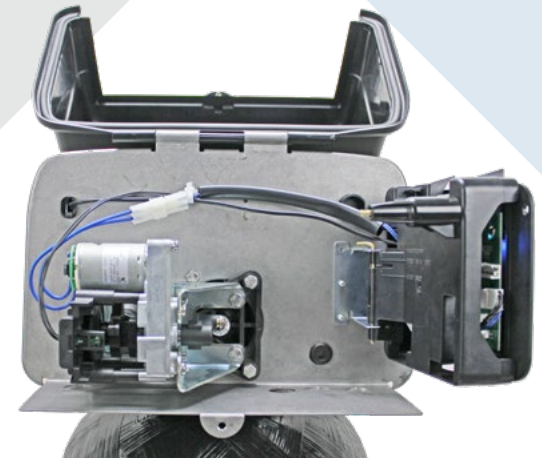
Continuous Service flow rate and backwash of 70 GPM

Hot water rated up to 150°F with no additional components

Top Hinge Cover for Easy Servicing

- Environmentally protective
- Water & corrosion resistant
- UV stability

Hinged drive motor eliminates the required removal of powerhead assembly



Backwash capability accommodates tanks up to 36" and filters up to 36" in diameter based on 10 gpm/ft<sup>2</sup>

Time tested hydraulically balanced composite piston for service and regeneration

PISTON	BYPASS	NO BYPASS
Continuous (15 psi drop)	70 GPM	70 GPM
Peak (25 psi drop)	90 GPM	90 GPM
CV (flow @ 1 psi drop)	18 GPM	18 GPM
Max Backwash (25 psi drop)	70 GPM	70 GPM



bypass

no bypass